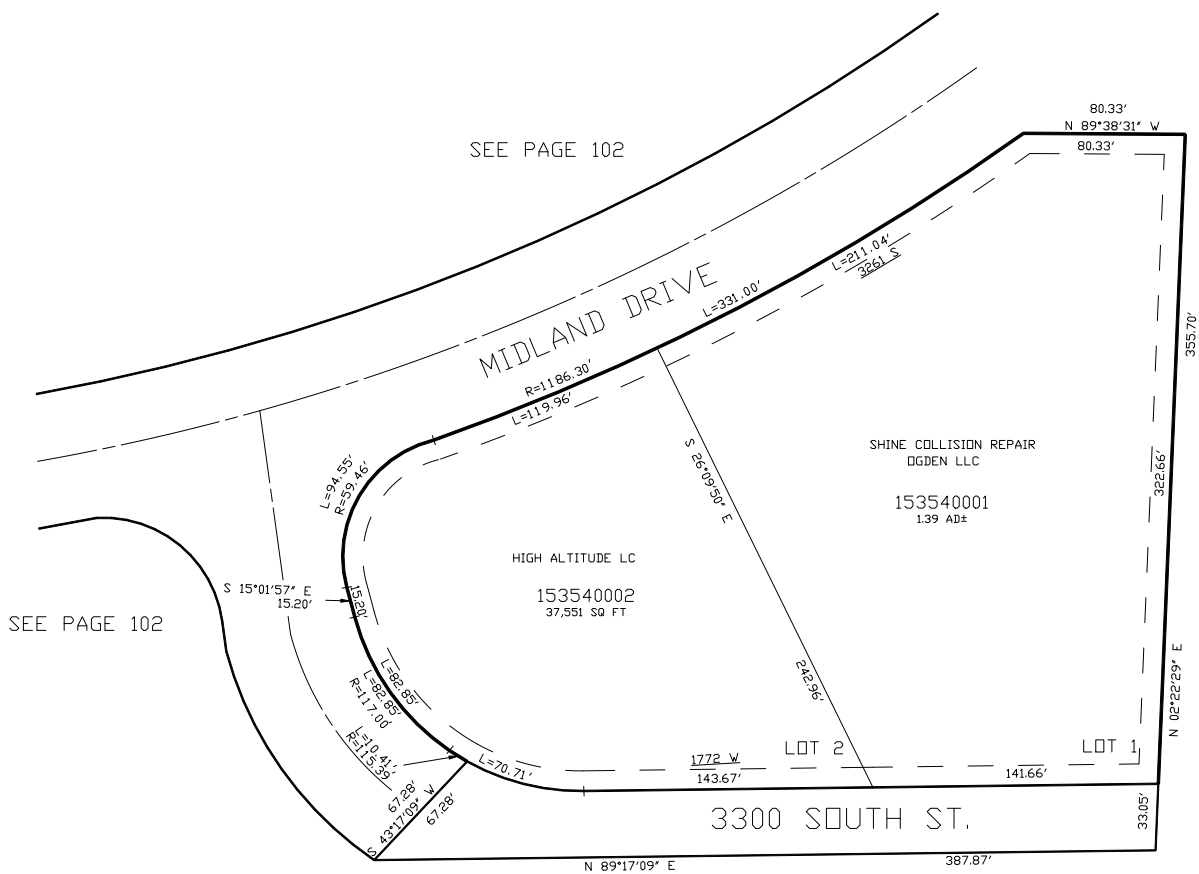


IN OGDEN CITY

SCALE 1" = 50

TAXING UNIT: 451



SEE PAGE 102

SEE PAGE 102

FOR COMPLETE ENG DATA SEE  
ORIGINAL DEDICATION PLAT IN  
BOOK 58, PAGE 56 OF RECORDS.

10' UTILITY & DRAINAGE EASEMENTS EACH  
SIDE OF PROPERTY LINES AS INDICATED  
BY DASHED LINES EXCEPT AS OTHERWISE  
SHOWN.